

PCLA

NEWSLETTER



Iron River Pike Chain of
Lakes Association, Inc.
www.pikechain.org

FALL 2010

Prepared by Kris Sandager

Articles of Incorporation Define Focus On Our Lake Management

Article III in the Articles of Incorporation of the Iron River Pike Chain of Lakes Association Inc. (PCLA) is included in this newsletter to definitively describe what we are about -see below. It defines our purposes as exclusively sustainable management of the Iron River Pike Chain of Lakes. This is one feature that makes us different from traditional Lake Property Owners Associations. The second difference is membership. Any individuals interested in promoting sustainable management of the Iron River Pike Chain of Lakes can make tax deductible donations and/or pay their dues and become a member. Donations can be in the form of money, property or conservation easements. You will soon be able to find the complete Articles of Incorporation and our Bylaws at www.pikechain.org.

The tax exempt status and rules on membership provide a significant opportunity to expand the base of

support for sustainable management of the Pike Chain. I foresee the potential for doubling both our membership and fiscal support if we use these opportunities to our advantage. Furthermore by welcoming campers, others who love these lakes and organizations that work to promote environmental quality in general, as members or sponsors, we will be better able to accomplish our goal of sustaining the quality of the Pike Chain for future generations. Looking forward a few years to the time our Wisconsin DNR lakes management grant runs out, we might anticipate that control of Eurasian Water Milfoil will still be necessary and the PCLA may need to cover the entire cost. This element of lake management alone could cost \$75,000. If we really love the lakes, we need to take advantage of the opportunities of PCLA offers us to do so. Submitted by: Dr. William Swenson, Board Member and Education Committee

Articles of Incorporation: Article III-Purposes

The corporation is organized and shall at all times hereafter be operated exclusively for charitable and educational purposes, more specifically to promote the sustainable managements of the Pike Chain of Lakes by:

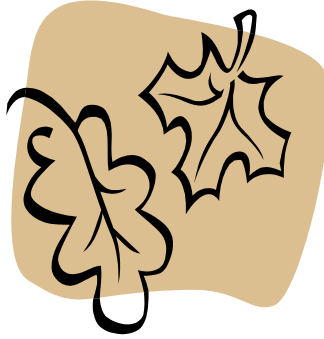
- (a) providing leadership in lake management through environmental education, water quality monitoring, prevention of the introduction of aquatic invasive species and controlling populations of aquatic invasive species existing in the watershed;
- (b) working with government agencies and private organizations to generate the necessary human and financial resources;
- (c) Purchasing or accepting the donation of property or conservation easements to promote the overall goal of sustainable lake management;
- (d) monitoring and responding to proposed developments within the watershed, taxation, land use planning and other environmental regulations; and
- (e) promoting mutual respect, cooperation and friendship between owners of property within the watershed, other lake users and Town, County, and State public officials by providing a forum for exchange of information and discussion on environmental issues of importance and concern.

Notwithstanding anything herein to the contrary, this corporation shall be operated exclusively for the purposes contemplated in Section 501(c)(3) of the Internal Revenue Code of 1986 or the corresponding provision of any future United States Internal Revenue law.

THE IRON RIVER PIKE CHAIN OF LAKES ASSOCIATION NEEDS YOUR SUPPORT

As we look back at 2010, I'd like to take time to thank those that have donated their time and money to support our association and invite more of you to get involved. For those who don't know, **we are now a nonprofit organization whose primary role is to promote the sustainable management of the Pike Chain of Lakes.**

Currently, we have one annual meeting that has required us to focus almost entirely on the key work of the organization. In the past these meetings have lasted three or more hours in length and frankly I was one of the many that would leave early. This year I was asked to run the meeting by Al Bochler, our President, and I agreed to do so if we could try to limit the meeting to two hours or less. Due to the long line to get registered and pay our dues (*which is a good thing*) we started ten minutes late at 9:10 but we were still able to adjourn at 10:45. We were able to do this by limiting our speakers to a maximum of 5 minutes. With future meetings lasting



2 hours or less it is my hope that more past and future members will attend and get more involved.

It is my hope that in the near future we can go to 2 meetings each summer, with the first meeting only addressing the key work of the organization and the second meeting following up on some of the key work and having a guest speaker. The guest speaker wouldn't be limited to 5 minutes but still keeping it short enough that the meeting would not last 2 hours.

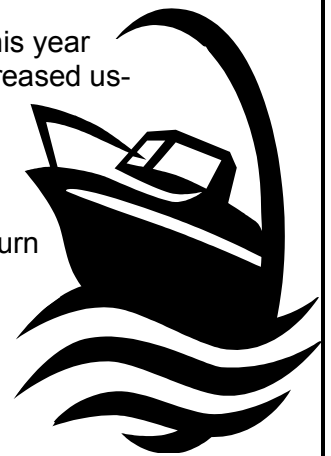
There is a lot more that could and should be done to help maintain and improve our Pike Lake Chain. All these activities depend on volunteers and money. We invite you to increase your involvement within the association. We need both your ideas and commitment.

Sincerely,

Eddie Wangenstein, Vice President PCLA

Clean Boat Clean Water Monitoring Program

- The Clean Boat Clean Water monitoring program on the Pike Chain and Delta Lakes has completed its seventh season.
- Economics and poor weather contributed to a decline in landing use last year. This year economics were still a factor and the Campground at Twin Bear experienced decreased usage.
- No violations were reported and only three uncooperative incidences were noted and reported as data by staff.
- The Program welcomed three new staff this season and all have committed to return for the 2011 season.
- The EWM beds have been diminished by treatment and pulling efforts. This is the first time in seven years of data collection that **NO** EWM was reported being found by monitors at the Twin Bear landing on boats, motors, trailers, or washed-up on shore.
- Education is still the most effective method of containing the spread of aquatic invasives. To my knowledge EWM has not been reported in any other lakes in the vicinity of the Pike Lake Chain.
- If you wish to volunteer or have interest in a staff position please contact me at knb@cheqnet.net
- The program will resume the 1st weekend of May, 2011.



Thank you for all of your cooperation and support.

Sincerely,

Karen Austin, Clean Boat, Clean Water Coordinator - Pike Chain of Lakes / Delta-area Lakes

Meet the Board of Directors

Al Bochler, President and his family have owned their cabin on Eagle Lake since 1956. He's served on the board as President since 2008 and also is the chair of the AIS Committee. Al and his wife Barb live in Ashland, WI. He's a retired Federal Employee. His interests include family activities, diving, hunting and fishing. Al and Barb have 3 children. Two of them also own cabins on the Pike Chain.

Eddie Wangenstein, Vice President is from St. Paul, MN and has been on Lake Millicent for 53 years. He's attended meetings and/or has been involved with the lakes association for approximately 30 years. This is his first year on the board. Eddie is a Union Sheet Metal Worker. He enjoys cabin life and will be retiring up there soon. Areas of interest include art, sports, hunting, fishing, and the cabin/lake. Eddie has 27 year old twins, a 5 month old grand-daughter, fiance Amy, and his beloved golden retrievers Rusty and Misty.

Bob Ruef, Treasurer and his wife Roberta purchased their lake property on Eagle Lake in 1978. While working, they visited on weekends staying in a travel trailer for the first 30 years. In 2007 they cleared a site and broke ground and completed their home in 2008. In February 2009 after Roberta retired, they moved there permanently from Stevens Point. Bob and Roberta have been association members for the past 3 years. Bob agreed to serve as interim treasurer and was elected treasurer at the annual meeting in August. Bob is retired after 32 years of working for the United States Department of Agriculture. He and his wife enjoy traveling and have visited about 40 countries to date. This October they are planning a trip to Turkey and Syria. Their 5 children are scattered across the United States-California, Oregon, Texas, and NYC.

Kristen Sandager, Secretary lives Eau Claire, WI with her husband Tom. She's been on Hart Lake for almost 50 years. In 1996, she and her husband bought their cabin that is next door to the family cabin that her mom and dad built. She is serving her first term on the board. Kris is an Adult Nurse Practitioner at UW-Eau Claire Student Health Service. Her interests include family activities, spending time at the lake, water activities, cooking, and skiing. Tom and she have 3 young- adult children who also love spending time at the lake.

John Joseph and his wife Jeanne grew up in Iron River. In 1980 they bought their property on Buskey Bay and replaced the original trailer with their present home in 1995. They've been involved with the lakes association since the mid-1980's. John has served as a board member, past vice-president and past president. He's oversees the PCLA website. John is retired and a former college IT instructor. They have a condo in Neenah, WI close to their grandchildren and spend a couple of Wisconsin's chillier months in Florida each winter.

Tony Mullozzi has been on Twin Bear for 25 years and winters in Surprise, Arizona. He's been involved with the lakes association for about 20 years and during this time has served on the board twice, been involved with lake

studies, limnology, secchi disc, and grant matching activities. He was also the past president and founder of Half Moon Lake Protection & Rehab Lake District. Tony earned a PhD in psychology and is a former university professor. He's been a first aid instructor, motorcycle mechanic and racer. Interests include downhill and slalom waterskiing. Tony is also a long term member of the Iron River Lions Club in addition to being involved with many other volunteer organizations. He has 2 children and 4 grandchildren.

Betsey McKinney and her husband live in DeForest, WI. She's been involved with the lakes association for many years and on the board for 4 years. Her family has owned property on Twin Bear for 66 years and her father built the cabin that they remodeled in 2000. She's a retired high school librarian and likes to spend time gardening and volunteering at several libraries. She has 3 children and 5 grandchildren who also love their Twin Bear "Rocky Point". In the future she's hoping PCLA can address the rising property taxes so that future generations are not shut out from enjoying our lakes.

Jerry Peck has been involved with the lakes association for 9 years and has served on the Board for 3 years. He and his wife Julie purchased their home on Buskey Bay in 2001. Prior to moving there year round, they shared joint-ownership of a cabin on Buskey Bay with Julie's family for many years. He was the Assistant Superintendent of Schools in Superior and has been retired since 2003. He enjoys golf, reading, and cutting grass at Northern Pines Golf Course. He has 3 adult children, 7 grandchildren and two more on the way.

Greg Ogren grew up 18 miles to the North in Port Wing in the midst of Lake Superior, graduated from South Shore High School, and now lives in the Township of Iron River. He's been on Hart Lake for 6 years and Deep Lake the previous 6 years. This is his second year on the Board. Greg is married and has 3 children. He enjoys time with family and all outdoor activities especially those involving water, snow or ice.

Jim Swenson was born in Superior, WI. He earned in B.A. in Chemistry from U.M.D. in 1959. In 1968, he and his wife Sue (Locken) moved to California where they currently live and in 1978 started Details Inc., a manufacturer of printed circuits which they then sold in 1996. He and Sue built their home on Lake Millicent in 2002 and spend 4-7 months there annually. They have a son, daughter, and 4 grandchildren.

Dr. Bill Swenson lives in Superior with his wife Danna. They have enjoyed their cabin on Eagle Lake for 17 years along with their 2 children and their families. Bill has been active in Pike Chain management since the mid 1980s, in part because of his position as a UW-Superior Professor. In addition to teaching campus classes in water resource management he conducted research throughout the Midwest and worked statewide with adults on Water Resource Management for University of Wisconsin Extension. His hobbies are lakes.

Water Clarity Monitoring – Pike Chain of Lakes

Volunteer lake monitors have been an integral part of the Wisconsin lakes since 1986. Just over 1000 citizens donate their time and energy in monitoring water quality on lakes statewide. This data is used to learn more about our lakes, watch for any long-term changes in water quality lake management, and provide valuable data to both state and federal lawmakers.

Currently, there are six volunteers on the Pike Chain and its watersheds::

- John Bochler – Eagle and Flynn
- Martha Oie – Twin Bear
- Glenn Viggiano – Buskey Bay
- Josh Teigen – Hart
- David Onan – Millicent
- Lona Schmidt – Muskellunge
- McCarry Lake – Vacant

As with all our volunteers, they give willingly of their time from May-September, so be sure to say “Thanks” when you see them!

This is the 2nd year that data has been collected. Volunteers observe and document lake water quality by measuring water clarity with a Secchi disk. The 8-inch diameter black and white disk is lowered into the water on a rope until it can no longer be seen, then this depth is recorded. Readings can be taken up to 3-4 times a month, beginning when the ice goes off until late October.

Along with the Secchi readings, the volunteers also record other information such as the time of the day, if the Secchi disk hit bottom, the color of the water, weather conditions/observations, etc. All of this information is recorded on DNR’s database at the end of the year.

Below is an overall average of the 2009 Secchi readings for each lake, as well as 2007 (first year data was recorded) If you’d like to see a more in-depth report for each lake, go to the Pike Chain of Lakes website (www.pikechain.org). They will be listed under Secchi Reports. Submitted by Jane Swenson



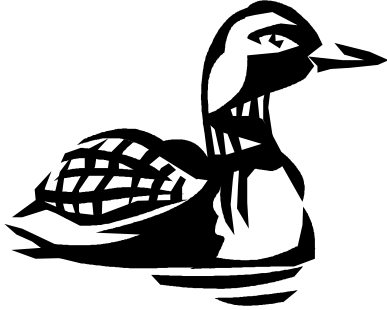
LAKE	2007	2009
Buskey Bay	15.4	21.3
Eagle	13.1	20.9
Flynn	8	7
Hart	18.5	22.8
Millicent	20	26.5
Muskellunge	****	12.9
Twin Bear	15.2	19.4

OUR LOVE AFFAIR WITH LOONS *by Jane Swenson*

Imagine what it would be like without our beloved loons. They are one of the many wonders that keep us connected to the North. By now, most have headed south for the winter where they will face a life-threatening challenge – the gulf coast oil spill. Even though the worst is over, the pending danger lies below. .

Did You Know:

- Half the loons go to the Gulf Coast and half go to the Atlantic coast?
- Juvenile loons stay down south until they're 2-3 years old and were the first fatalities of the gulf spill?
- Oil can remove the waterproofing of the loons' feathers, causing hypothermia/drowning?
- While molting down south, loons are flightless for a month and may starve due to loss of their food source?
- While preening their feathers, the loons will ingest the oil?



There are many more perils the loons face that experts have yet to discover. There is only one way to know the extent of the damage and that will be in the spring when the loons return to their homes. That's

where you come into the picture.

What Can I Do?

Become a volunteer – The Loon Watch Program for the State is located at the Sigurd Olson Foundation in Ashland. Currently, there are loon monitors on each lake in the Pike Chain. Due to the size of the lakes, it takes more than one pair of eyes to monitor all the loon activity. It's vital that you monitor the loons near your home/cabin and record their arrival, activities, etc. so they can be documented. Contact Jane Swenson @ swensonje@cheqnet.net (715-372-4027) for more information.

Spread the word – Tell others about the Loon Watch Program. The more volunteers who are monitoring the lakes, the better. You don't have to have a nesting pair on your lake. If you have one or two, or just a couple who stop for a while, that's all it takes. **Loon Watch Program**, www.northland.edu/loonwatch **715-682-1220**

Learn about Loons – Visit the website listed above. Check out the [Loon Watch Blog](#) (right side of the loon picture) where you will find information about all the various projects and human interest stories.

Make a Donation – This program depends on loon lovers like you to keep the program going. Go to the website or contact Linda Carlson at lcarlson@northland.edu 715-682-1816.

Aquatic Invasive Species Committee Report

The Eurasian Water Milfoil (EWM) has been known to exist in the Pike Lake Chain since it was discovered in the channel between Twin Bear and Hart Lake in August of 2004.

The Lake Association actively worked with Bayfield County the State of Wisconsin and the towns of Iron River and Delta to understand and control the invasive plants. Monitoring and chemical treatments started in July of 2005 with approximately 8 acres being treated. The EWM has been chemically treated and hand pulled since that date. In 2009 we treated 27 acres in Twin Bear, Hart, and Millicent lakes.

With our efforts on creating a comprehensive management plan dated 12-2008 (posted on our website www.pikechain.org) we have been able to work with the Wisconsin DNR and our consulting firm Onterra, LLC to be more selective in our treatments. We have received encouraging results the past year with the acres being treated reducing from 27 acres in 2007 to 15 acres in 2010. We will be treating the areas posted with our yellow signs in May or June of each year.

Our Association is fortunate to have a dedicated group of volunteers who spend considerable time diving, snorkeling and monitoring the EWM by boat. This group of approximately 20 people provide invaluable information regarding locations of new plants and assist with hand pulling in the new locations.

The above described efforts along with the \$161,000.00 State of Wisconsin DNR aquatic invasive species grant have prevented the Pike Lake Chain from becoming infested to the point where boat traffic in our shallow lake channels is restricted.

Please contact Al Bochler committee chairman @ 715-682-6372 or our Lakes Association at P.O. Box 602 Iron River, WI 54847 to volunteer or assist in other ways.

MEMBERSHIP

A form of our association has been in existence since 1949 with varied numbers of dues paying members. As a result of our receipt of the State Grant of \$161,000 in 2009, a higher percentage of property owners became involved with our association. With our increased visibility and activity, membership grew from less than 100 in 2008 to close to 180 last year. To date, we have a membership of 93 households. It is our hope that this newsletter will again generate a similar response to our membership drive as last year when a high percentage of the lake property owners paid their membership dues and contributed additional funds to sustain the mission of the Lake Association. To contribute or volunteer please complete the form on page 7. Thank you!



New guide is out for invasives...

- A new field guide is available to help identify invasive plants in Wisconsin.
- Written by state DNR forestry and endangered species resource staff
- "A Field Guide to Terrestrial Invasive Plants of Wisconsin"
- Photographs, identification, control
- Check out DNR website at dnr.state.wi.us
or call 608-267-5066

CONTRIBUTE TO LAKE MANAGEMENT FORM

FINANCIAL CONTRIBUTIONS

Become a PCLA member \$15.00 _____

Donate to lake management*

\$1.00 per foot of frontage or other _____

Total _____

Make checks payable to: Iron River Pike Chain of Lakes Association, Inc.

*Those pledging or contributing \$100 or more by 12/31/10 will receive a laminated map of the Pike Chain.

VOLUNTEER CONTRIBUTIONS (check any areas of interest)

_____ EWM Survey and Control: Continuing _____ New _____

_____ Boat Landing Monitoring: Time _____ Special fund _____

_____ Water Quality Monitoring

_____ Purple Loosestrife Control

_____ Shoreline Restoration

_____ Fundraising and Social Activities

_____ Serve on PCLA Board

_____ Serve on PCLA Committee:

Aquatic Invasive Species _____ Education _____ Fisheries _____ Fundraising _____

Water Quality _____

Name _____

Lake _____

Home address _____

Lake address _____

Email address _____

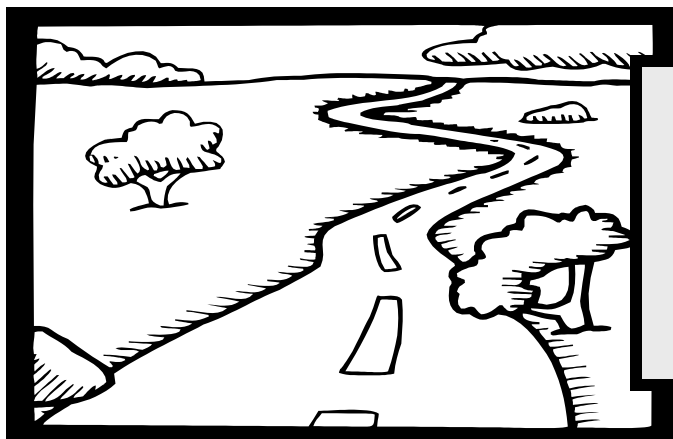
MAIL TO:

Iron River Pike Chain of Lakes Association, Inc.
P.O. Box 602
Iron River, WI 54847

PCLA
Iron River Pike Chain of Lakes Assoc., Inc.
P.O. Box 602
Iron River, WI 54847

Adopt-a-Highway

Co-chairmen Jerry and Julie Peck have selected Saturday, October 16th to clean highway H for the Adopt-a-Highway program. The Iron River Pike Chain of Lakes Association's designated section of Hwy H is the 3 miles between the turn off to the Spot and Twin Bear Park. Volunteers will meet at 9 a.m. in front of the two little redwood buildings that used to be the Red Rooster Restaurant, right where you turn off H to go to the Spot. There should be adequate parking there. Be sure to wear work gloves. Vests and bags will be provided. Everyone is welcome to help although the WI DOT guidelines say no one under the age of 11 is allowed to participate. We are required to go through a few guidelines before we begin. With a good crew we should be able to do a good job in a relatively short time. Perhaps we can go for lunch afterward. If the weather is inclement, we will reschedule on Saturday, October 23rd at the same time.



Adopt-a-Highway
October 16, 2010
9 a.m.